

# PEG-BOARD

Bridging the gap between Research Group &  
Institutional Data Management Needs

Gregory J. L. Tourte

School of Geographical Sciences  
The University of Bristol

[g.j.l.tourte@bristol.ac.uk](mailto:g.j.l.tourte@bristol.ac.uk)

JISC MRD Programme Workshop — 2011-03-28



# What we do

- Geographers like to share...
- at least palæoclimatologists do!
- but our data isn't easy to share:
  - Large datasets
  - obscure ontology
  - data in weird units
  - ...
- Interdisciplinary environment very important



A series of case studies of palæoclimate data usage

- Archaeology - draft circulated for comments
- Earth sciences
- Evolutionary biology

Methodology:

- User scenario
- Use cases
- Functional requirements



- Administrative metadata for outputs
- - Dublin Core for document-level
- Metadata for the research data - Metafor
- Raised new questions:
  - Authority
  - Suitability
  - Accessibility



- Archive
- Browse
- Character (Cite)
- Discovery
- Extra



# Challenges

- Infrastructural changes - ongoing
- Changes in the funding landscape...
- Hardware availability - Sun, etc.



Bigger, faster machines

=

- More productive researchers ✓
- More outputs ✓
- An increasing storage problem ✓
- Invalidating last year's data management policy... ?



# Talking of data management policies...

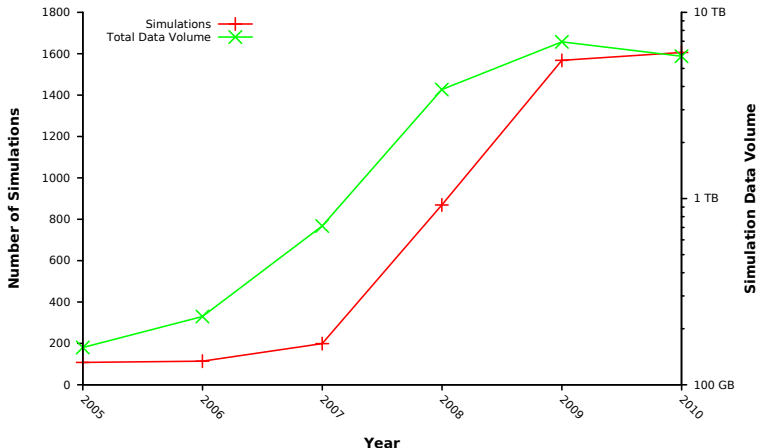
- New university-level infrastructural policy: £400/terabyte/year.
- We currently have 100 TB of archive and counting
- 20 terabytes of live data
- and another 100TB worth of live data that needs to be archived
- 220 TB of data at £400/TB = 88,000 - per year.
- (For this one could buy approx. 3 100TB raid devices per year, and have cash for part-time administration - keep in mind that network usage is mostly local)

... change of plan? Keeping data storage in-house?





# Data requirement evolution with Time



Year



# What's Next?

- Metadata workshop, joining Metafor effort
- Data retention policy, the sequel . . .
- Business case
- Licensing
- Continuing to liaise with external groups/data services about *linking*, *integration* and *compliance* with best practice, now and in the future



Any Questions?

